

Multi-Modal Generative AI with Foundation Models

Ziwei Liu 刘子纬

Nanyang Technological University



NANYANG
TECHNOLOGICAL
UNIVERSITY
SINGAPORE

S-LAB
FOR ADVANCED
INTELLIGENCE

2023

By ~~2027~~, creators won't
have to be technical, just
creative, thanks to
automation tools.

AI-Generated Content



Movie



Game



Anime

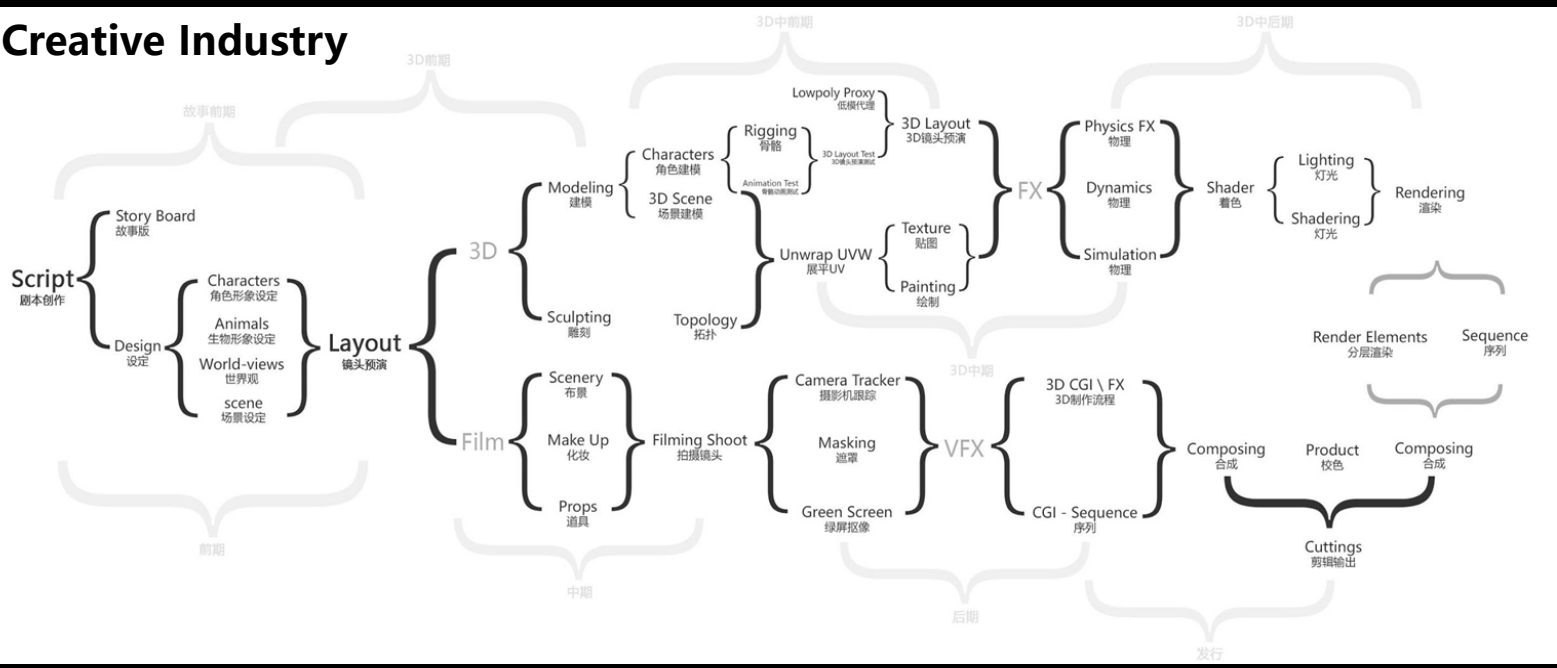


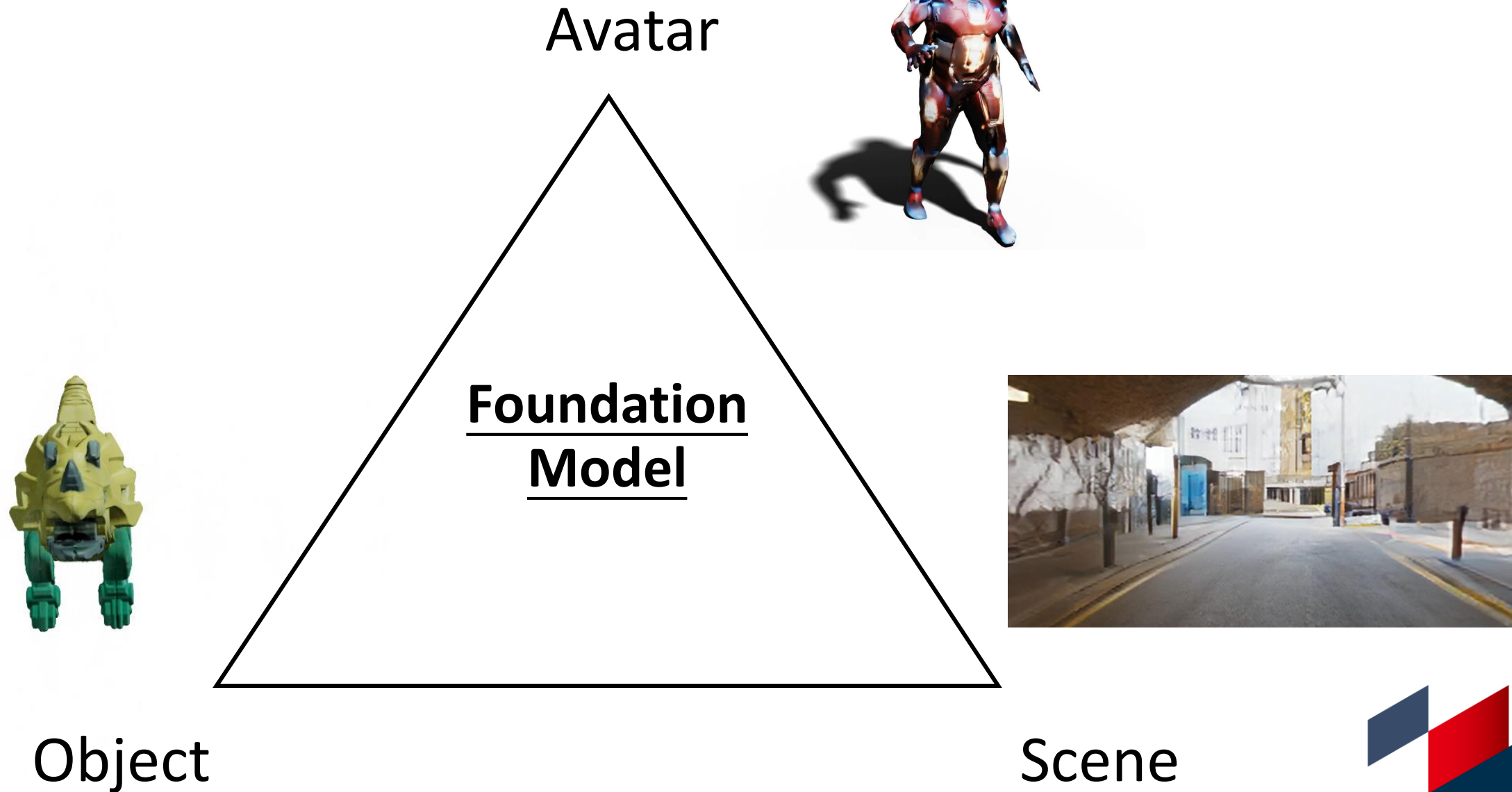
VTuber

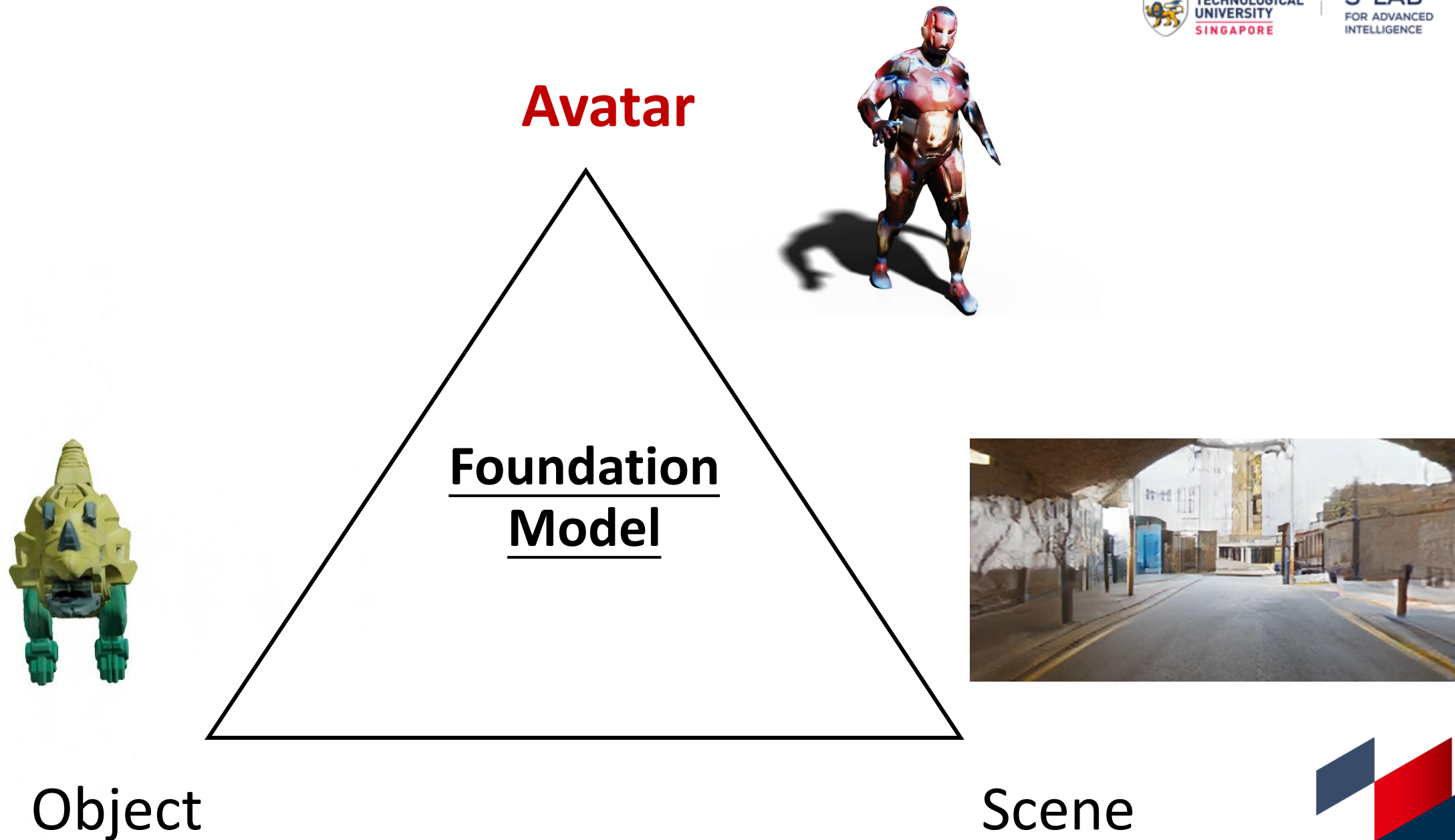


Virtual Beings

Creative Industry







StyleGAN-Human: 2D Human Generation



HyperHuman: 2D Human Generation



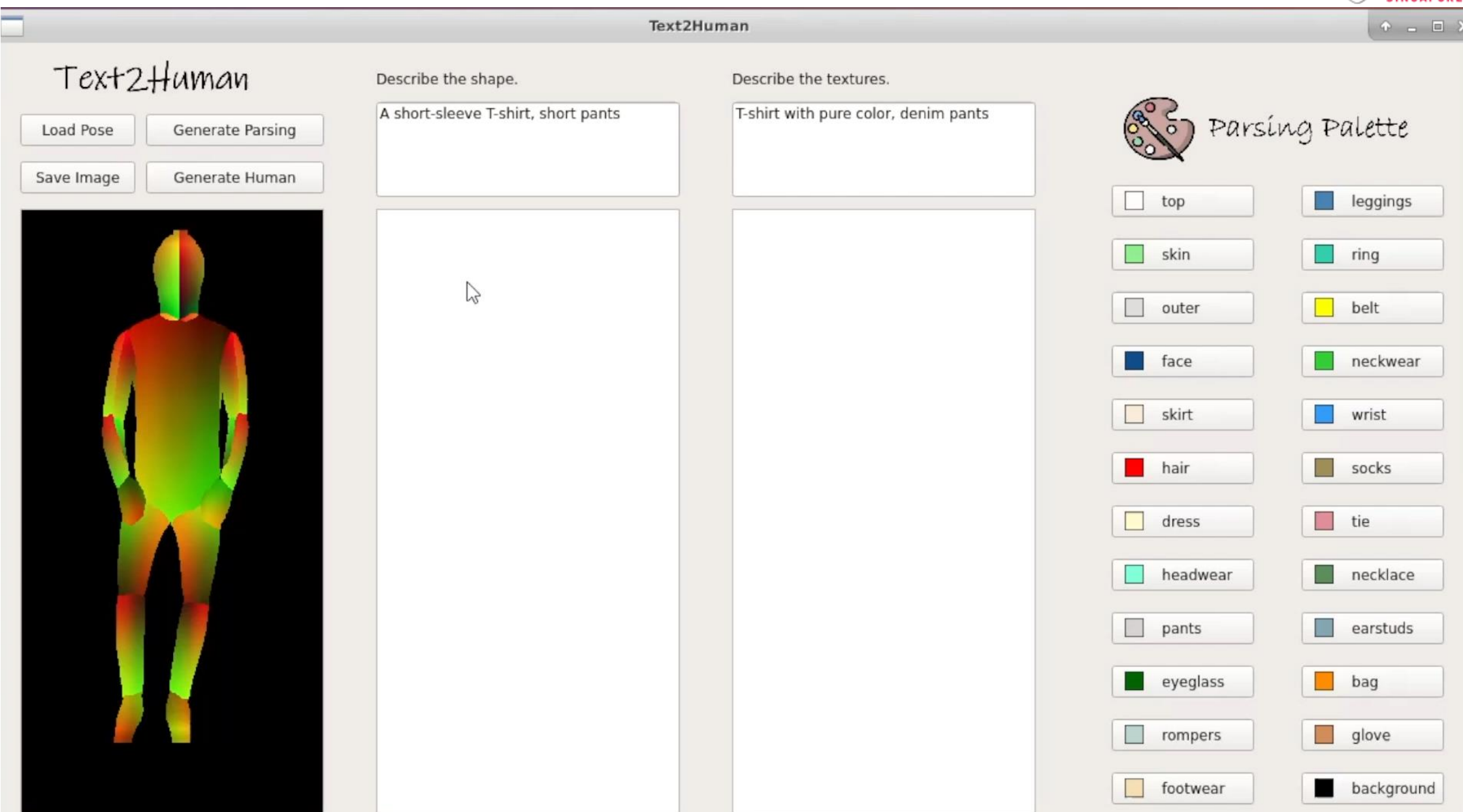
A baby girl with beautiful blue eyes
standing next to a brown teddy bear.



A little girl with wavy hair
and smile holding a teddy bear.



Text2Human: Text-to-2D Human



Text2Performer: Text-to-2D Human Video



The dress the person wears has medium sleeves and it is of short length. The texture of it is pure color.

The lady moves to the left.

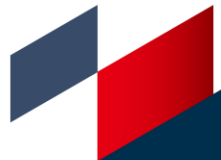
She is turning right from the front to the side.

She is turning right from the side to the back.

She turns right from the back to the side.

She turns right from the side to the front.


She moves to the right.



EVA3D: 3D Human Generation

- Learn 3D generation from 2D image collections



Static  *Articulated*



S-LAB
FOR ADVANCED
INTELLIGENCE



AvatarCLIP: Text-to-3D Avatar



I want to generate a
tall and fat Iron Man
that is running.



I would like to
generate a skinny
ninja that is raising
arms.



I want to generate a
tall and skinny
female soldier that is
arguing.




I want to generate
an overweight
sumo wrestler that
is sitting.


AvatarCLIP: Text-to-3D Avatar


60 FPS (1-60)


AvatarCLIP

Create Your Own Avatar
with Natural Languages!

Shape

Appearance

Motion

Download

Describe the Shape

Generate "A very skinny ninja that is shooting basketball"

Generate

Next Step

Renderer Controller

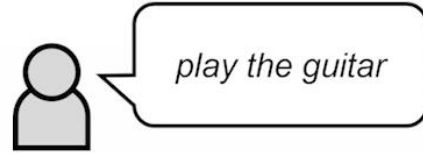
☐ Vertex Color

☐ Wireframe

☐ Normal



MotionDiffuse: Text-to-3D Human Video



ReMoDiffuse: Text-to-3D Human Video

ReMoDiffuse Visualization

SELECT MODEL



XBot



Vanguard



Josh



Michelle



Pete



Erika

Michelle



▼ Controls

▼ Pausing/Stepping

pause/continue

make single step

modify step size

▼ General Speed

modify time scale

▼ Visibility

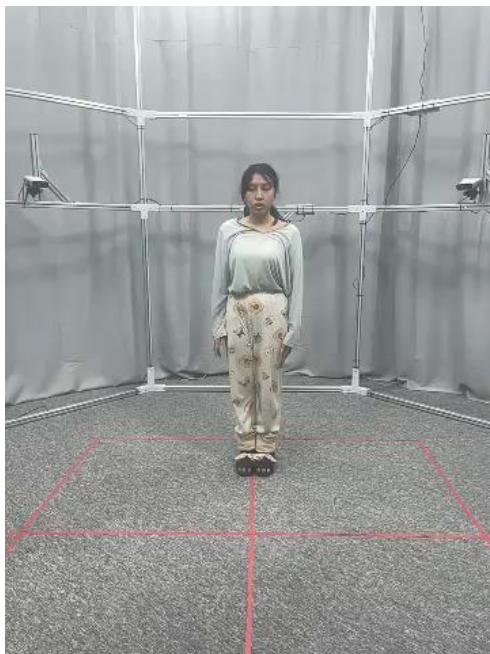
show model ☒

show skeleton ☐

HuMMan Dataset



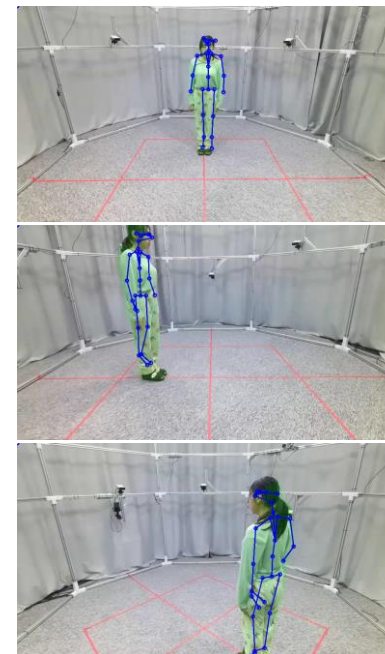
Artec Eva



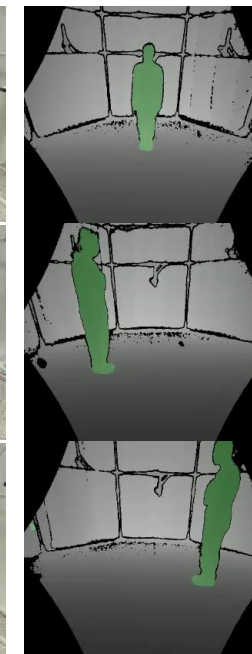
iPhone RGB



iPhone Depth



Kinect RGB



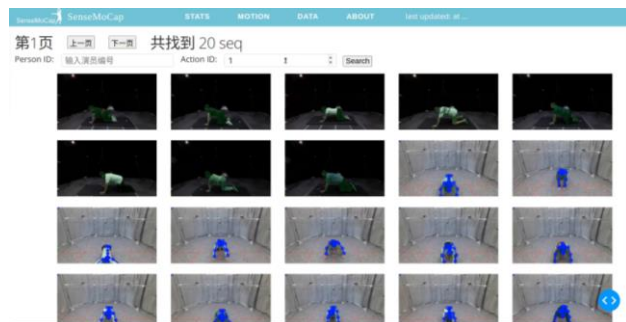
Kinect Depth

**0.1mm
Accuracy**

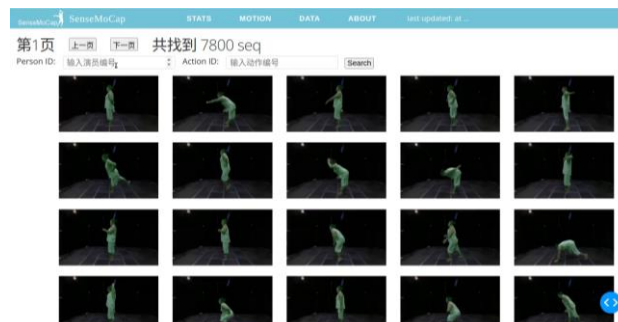
**11
Cameras**

**1G
Data / Sec**

**6
Actor / Day**



Search by Action

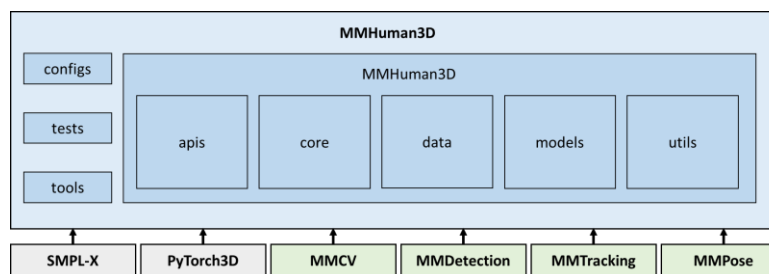
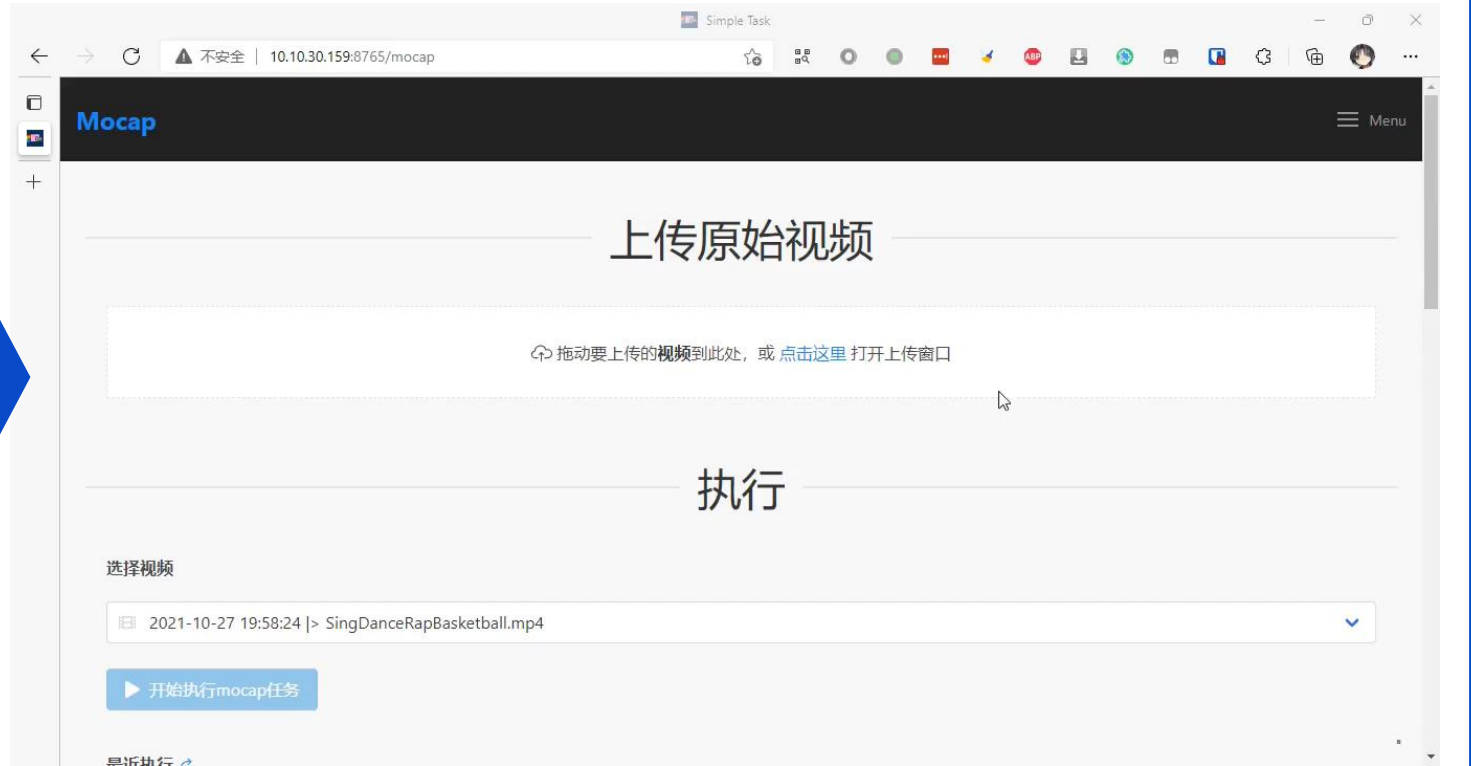


Search by Actor

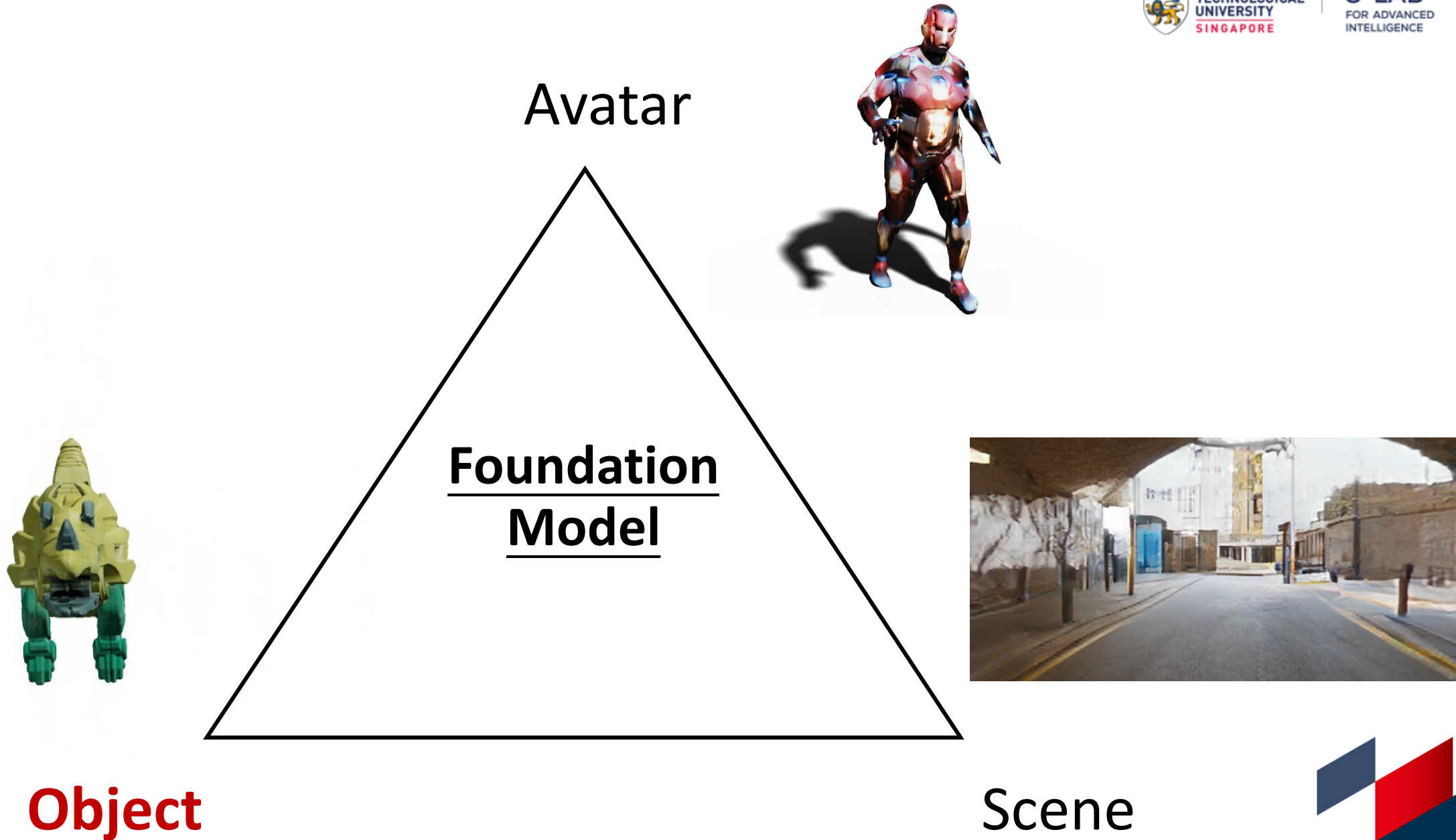
SMPLer-X: MoCap Anybody



MMHuman3D Software



3D Animation Production:
3 days -> 30 min

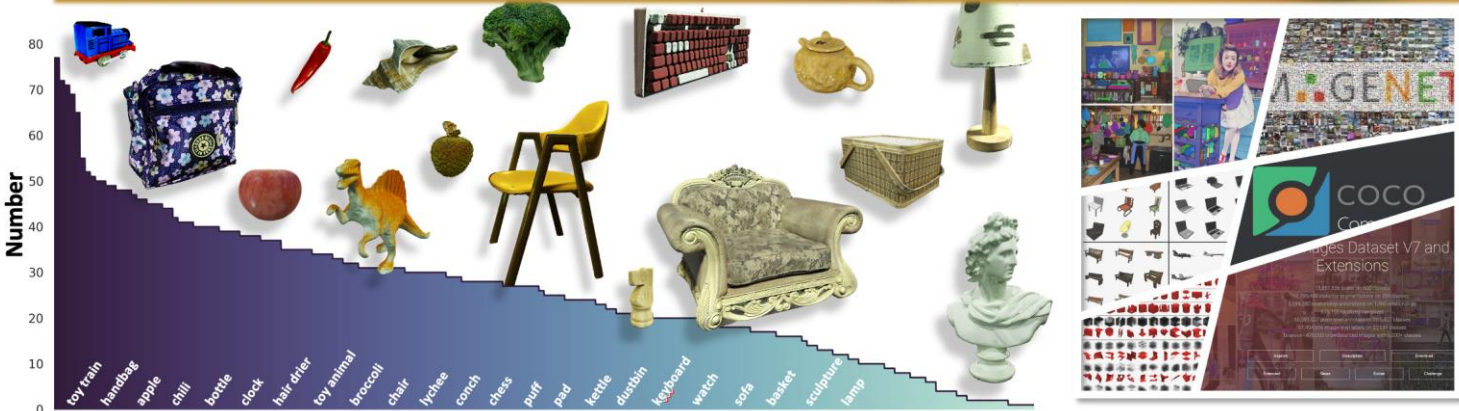


OmniObject3D: 3D Object Datasets

OmniObject3D is a **large-vocabulary** 3D dataset for **real-world scanned objects**.

- ✓ 6k high-quality 3D models
- ✓ 190 categories
- ✓ 4 modalities: textured mesh, point cloud, real-captured video, synthetic multi-view images.
- ✓ Many down-stream tasks

Dataset	Year	Real	Full 3D	Video	Num Objs	Num Cats
ShapeNet	2015		✓		51k	55
ModelNet	2014		✓		12k	40
3D-Future	2020		✓		16k	34
ABO	2021		✓		8k	63
Toys4K	2021		✓		4k	105
CO3D	2021	✓		✓	19k	50
DTU	2014	✓	✓		124	NA
GSO	2021	✓	✓		1k	17
AKB-48	2022	✓	✓		2k	48
Ours	2022	✓	✓	✓	6k	190



Real-world
3D scans

OmniObject3D: 3D Object Datasets



Summary

It's a teacup.

Appearance

This is a relatively small teacup with a brownish-red exterior and white interior, featuring a blue line pattern at the top and a rounded white bump on the bottom, structured in an overall axisymmetric manner.

Material

Ceramic, hard, reflective, smooth surface.

Style

Simplicity.

Function

Water storage.



Summary

It's a teapot.

Appearance

This teapot is white with a gray handle positioned perpendicular to the spout, and a small round gray handle at the top of the lid; the body of the teapot is adorned with a pattern of pink lotuses, gray lotus leaves, and red buds, all structured in an asymmetric manner.

Material

Ceramic, rough surface, hard, slightly reflective.

Style

Simplicity.

Function

Tea making, water storage.



Summary

It's a glasses case.

Appearance

Overall purple, the box features a pink LinaBell on the surface wearing a dark purple flower and blue eyes, complemented by a row of purple and pink letters underneath, all structured in an axisymmetric manner.

Material

Leather, rubber, metal, smooth surface, hard, slightly reflective, metallic.

Style

Cartoon.

Function

Store glasses, decoration.



Summary

It's a coral simulation model.

Appearance

The upper part of this coral simulation model is yellow, below the yellow section, there are pink and purple corals, the purple corals have white attachments on their surfaces, several colors of corals are on a brown reef, and the entire model is asymmetrical.

Material

Plastic, rough surface, hard, slightly reflective.

Style

Reality.

Function

Entertainment, decoration.

DiffTF: Large-Vocabulary 3D Diffusion Model



Voxurf: Fast 3D Object Reconstruction

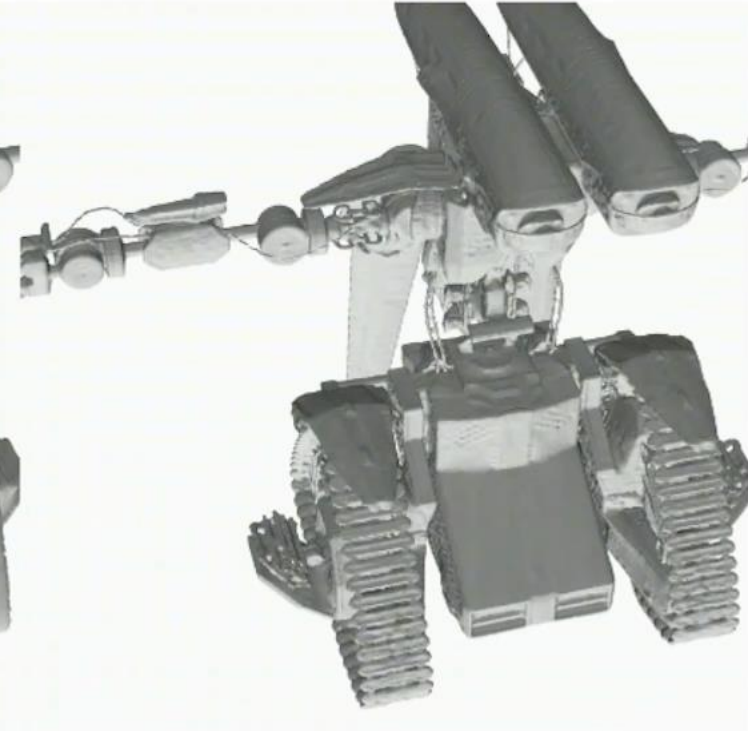
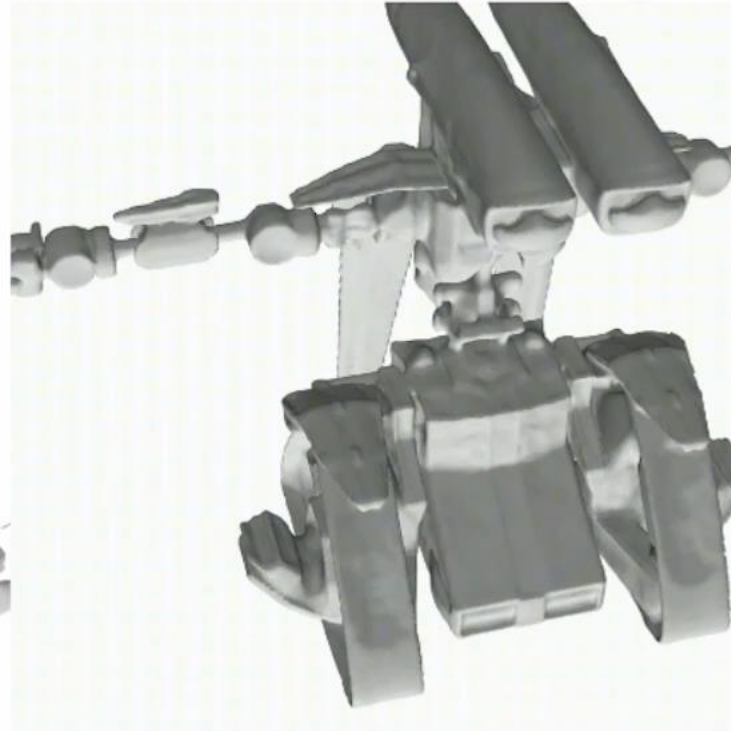
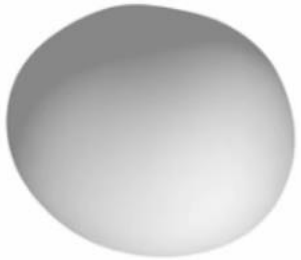
NeuS

00 m 00 s

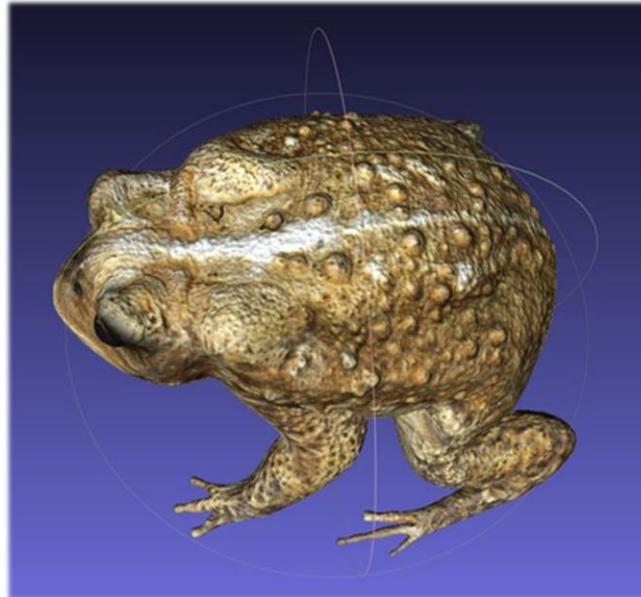
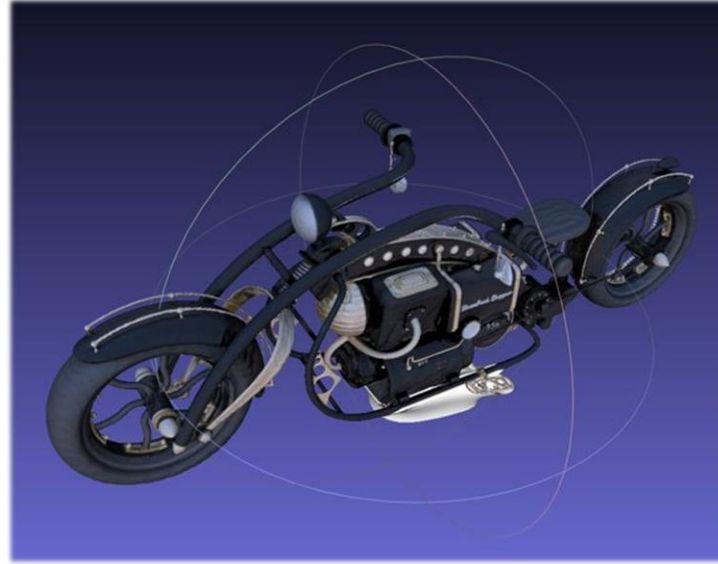
Ours

NeuS

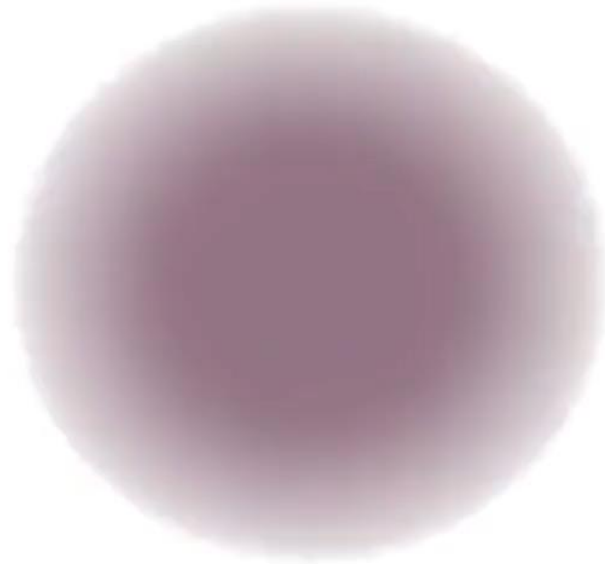
Ours



Voxurf: Fast 3D Object Reconstruction

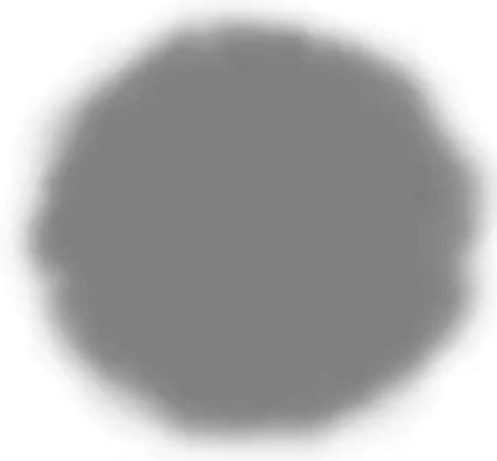


DreamGaussian: Efficient 3D Generation



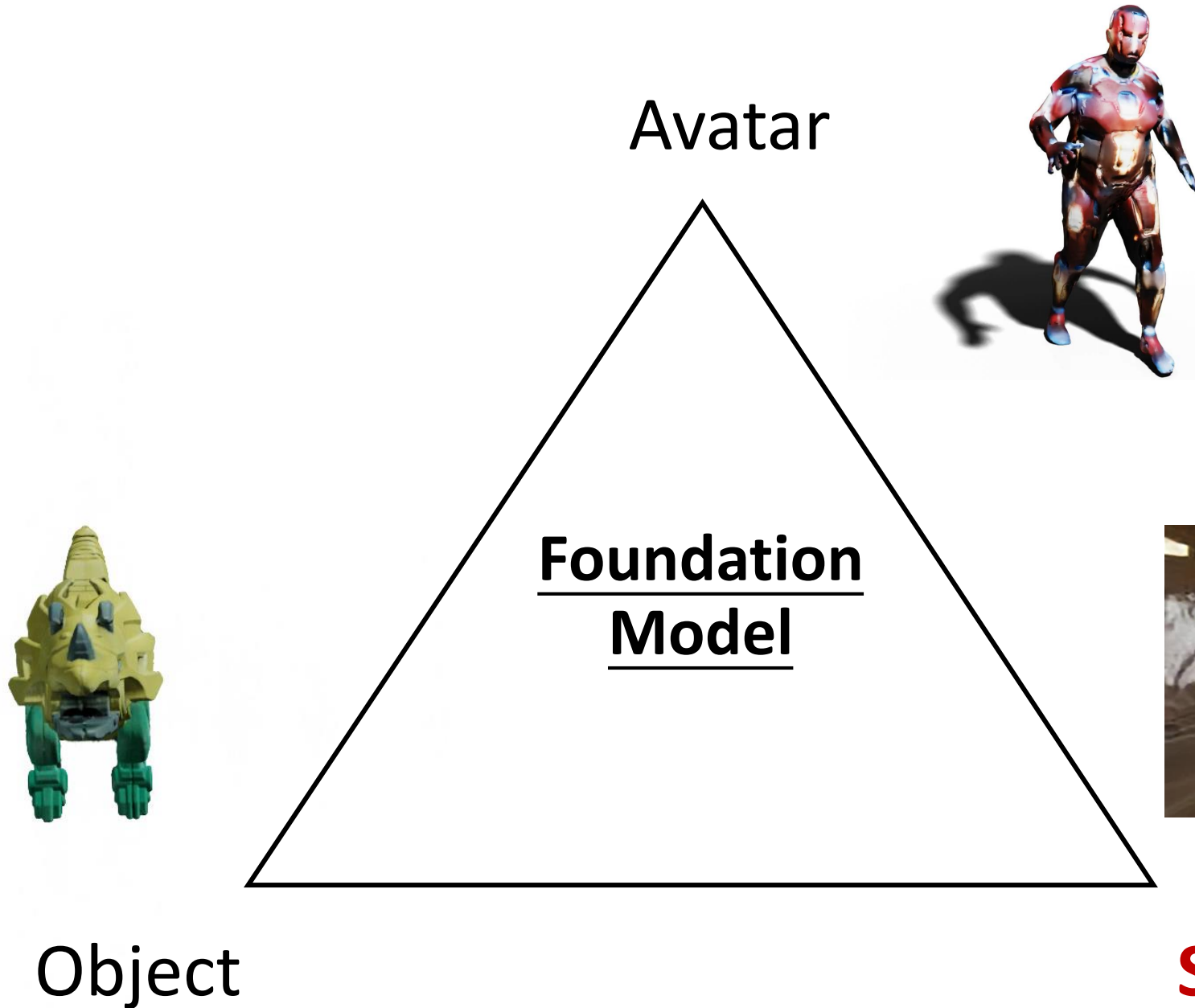
Zero-1-to-3 (NeRF)

00:00
Minute Second



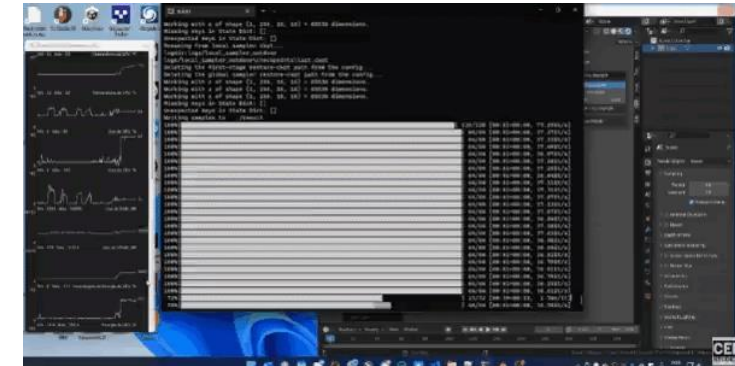
Ours (Gaussian Splatting)



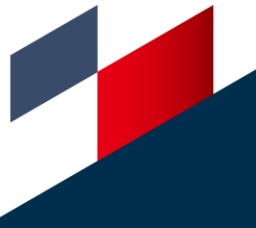


Text2Light: Text-to-3D Environment

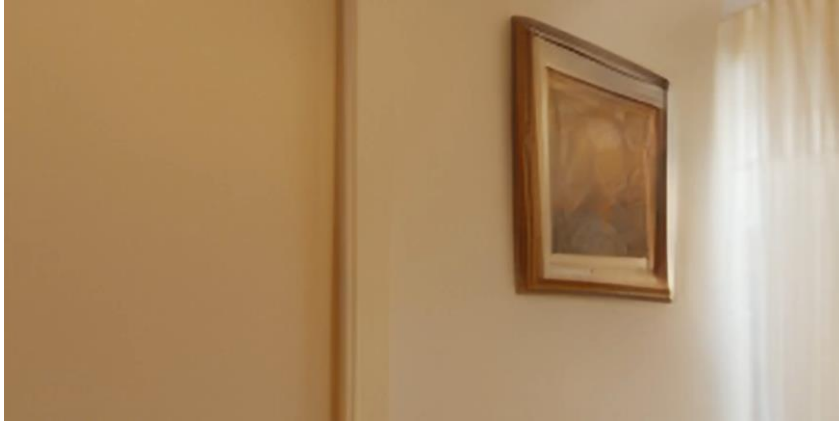
“brown wooden dock on lake surrounded
by green trees during daytime”



4K+ Resolution with High Dynamic Range



“white bed
linen with
white pillow”



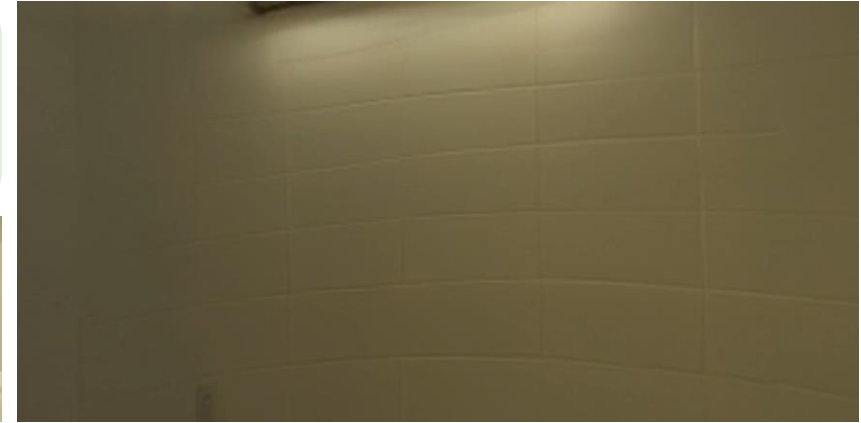
“brown wooden
floor with white
wall”



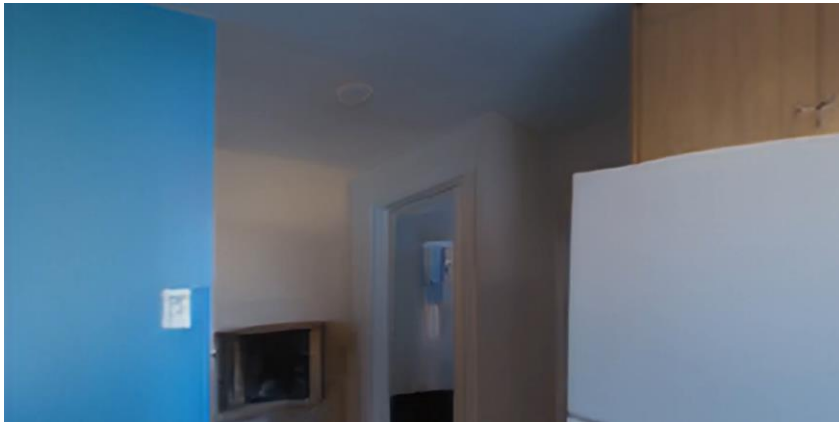
“gray concrete
pathway with
wall signages”



“closeup photo of
concrete stair
surrounded by
white painted wall”



“blue and
brown wooden
counter”



“empty parking
lot during
daytime”



Suzanne Monkey: glossy Shader balls: glass, diffuse, glossy, mixture of diffuse and glossy

Text2Light: Text-to-3D Environment

Text2Light
Own Your Reality
with Any Sentences

Describe Your Scene

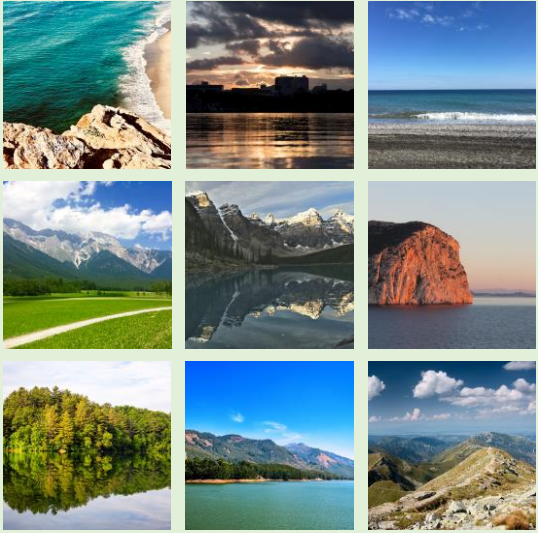
e.g. a living room

Generate

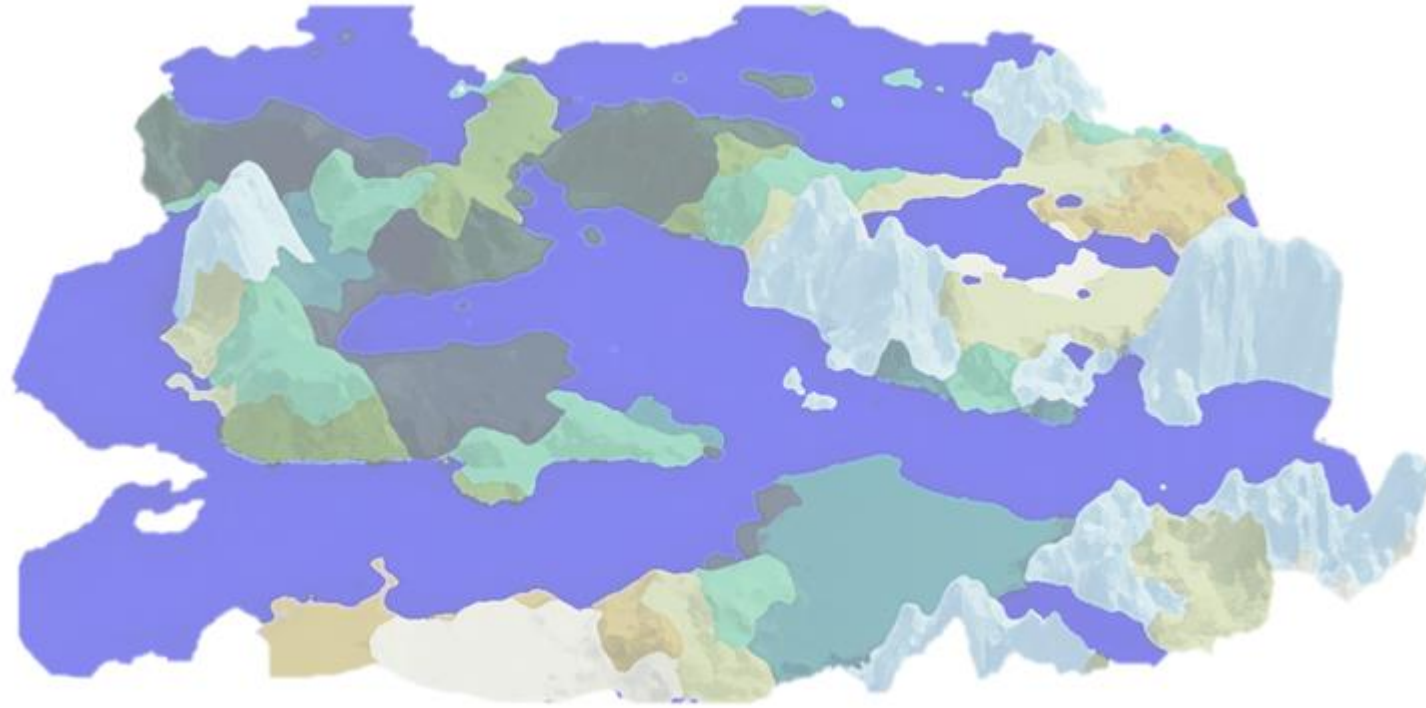
Render



SceneDreamer: Unbounded 3D Scene Generation

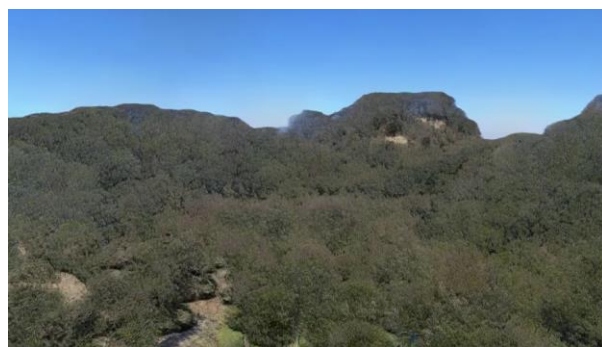


**In-the-wild 2D
Image Collections**



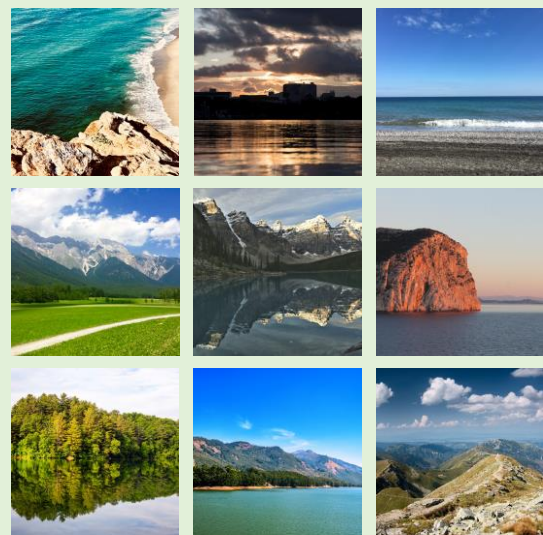
**Photorealistic
Unbounded 3D Scenes**

SceneDreamer: Unbounded 3D Scene Generation



Multi-view consistent

Well-defined geometry



**In-the-wild
Image Collections**



**Photorealistic
Unbounded 3D Scenes**



Diverse scenes and styles



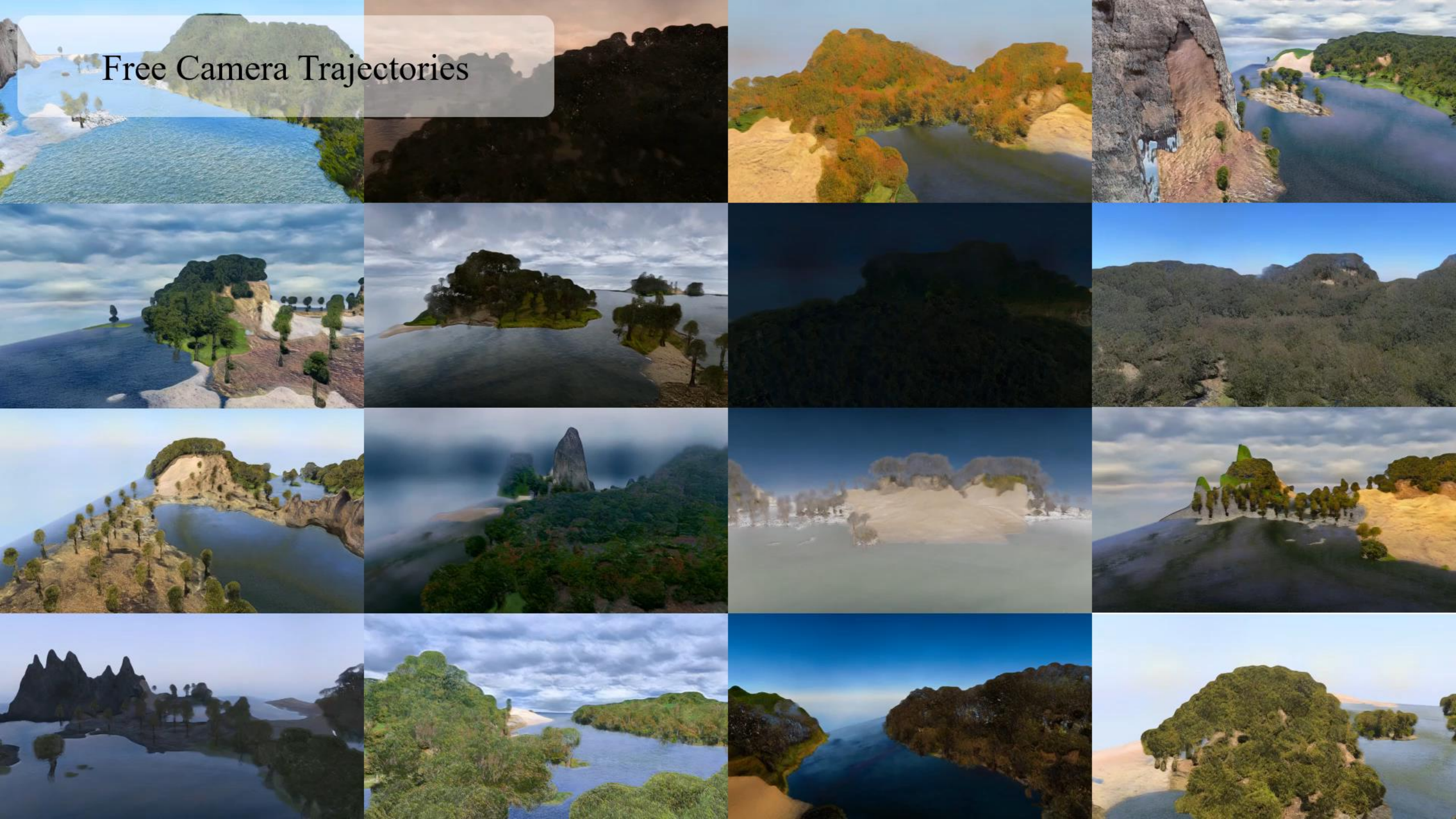
Infinite 3D World!



Generate with Different Styles



Free Camera Trajectories




CityDreamer: Unbounded 3D City Generation


CityDreamer: Compositional Generative Model of Unbounded 3D Cities


The official demo to generate your own city in New York style.

[Source Code](#) [Project Page](#)



**Layout**
Generate the city layout

**Trajectory**
Set up camera trajectory

**Render**
Generate your own city

Data Source

Layout Generator

Layout Size

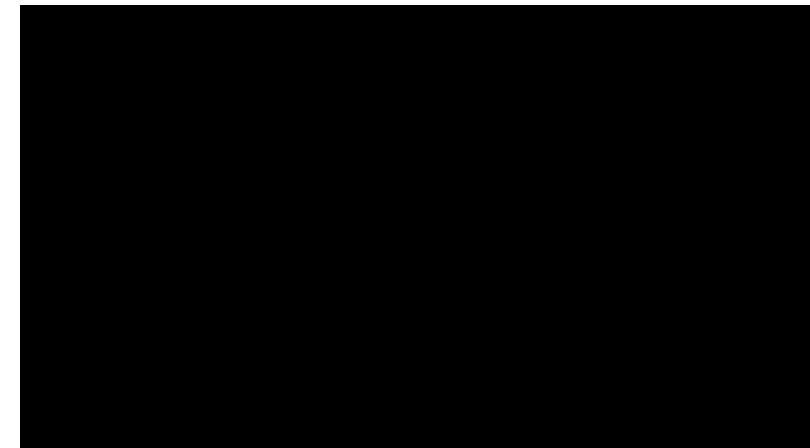
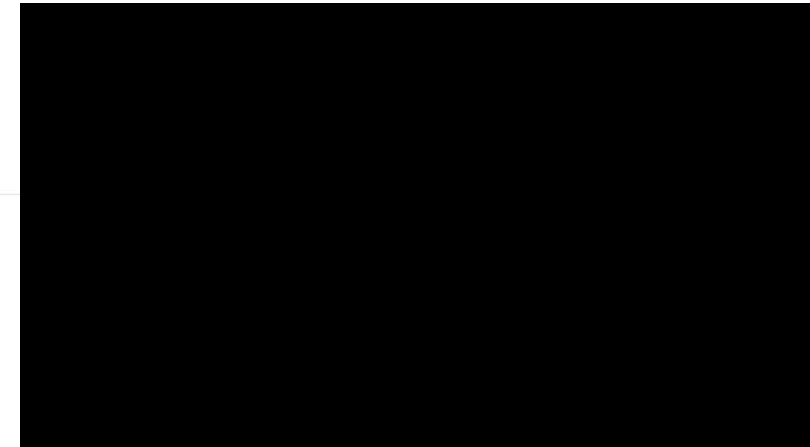
4096x4096

Generate

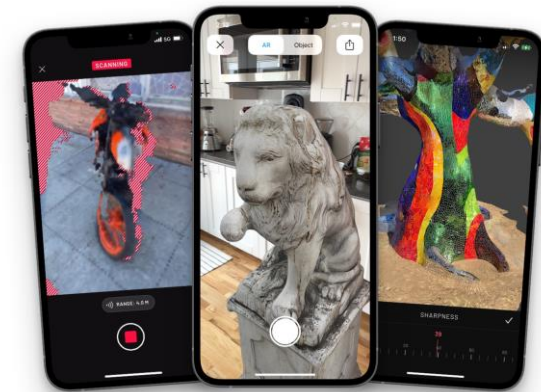
Segmentation Map

Height Field

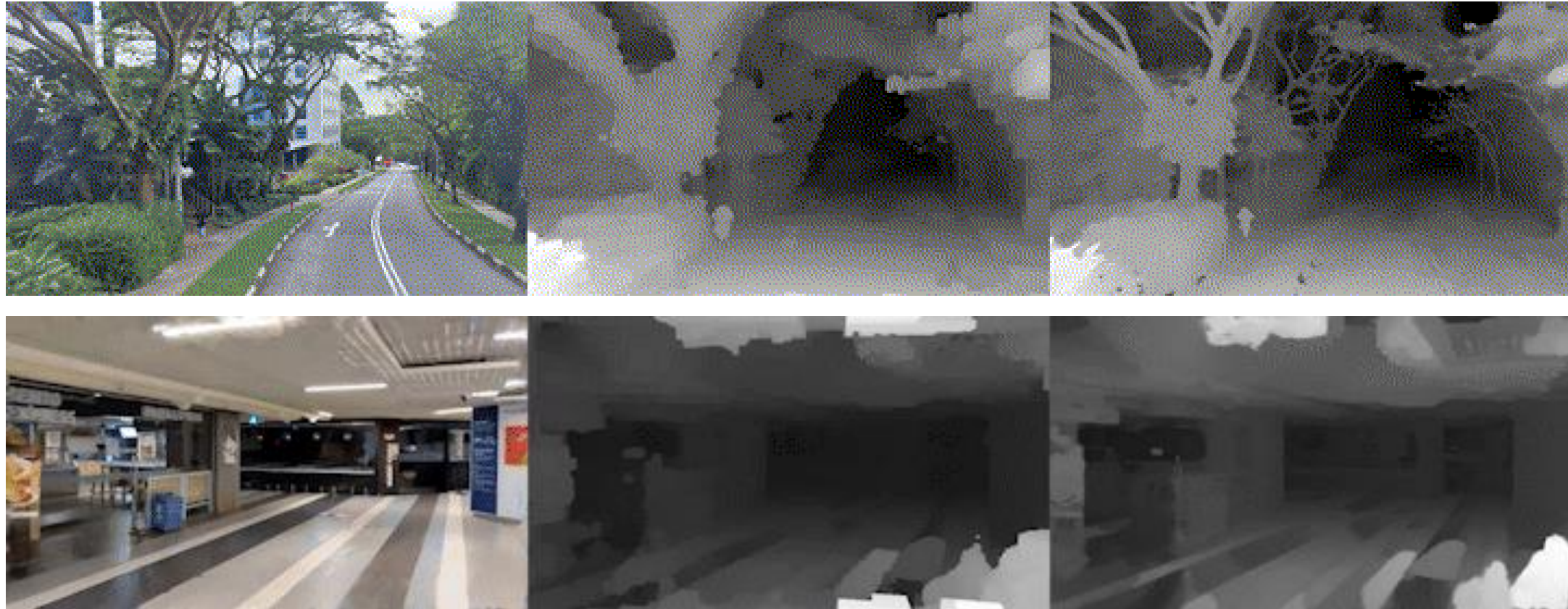
Press and hold the Ctrl/Command key to enter the edit mode.

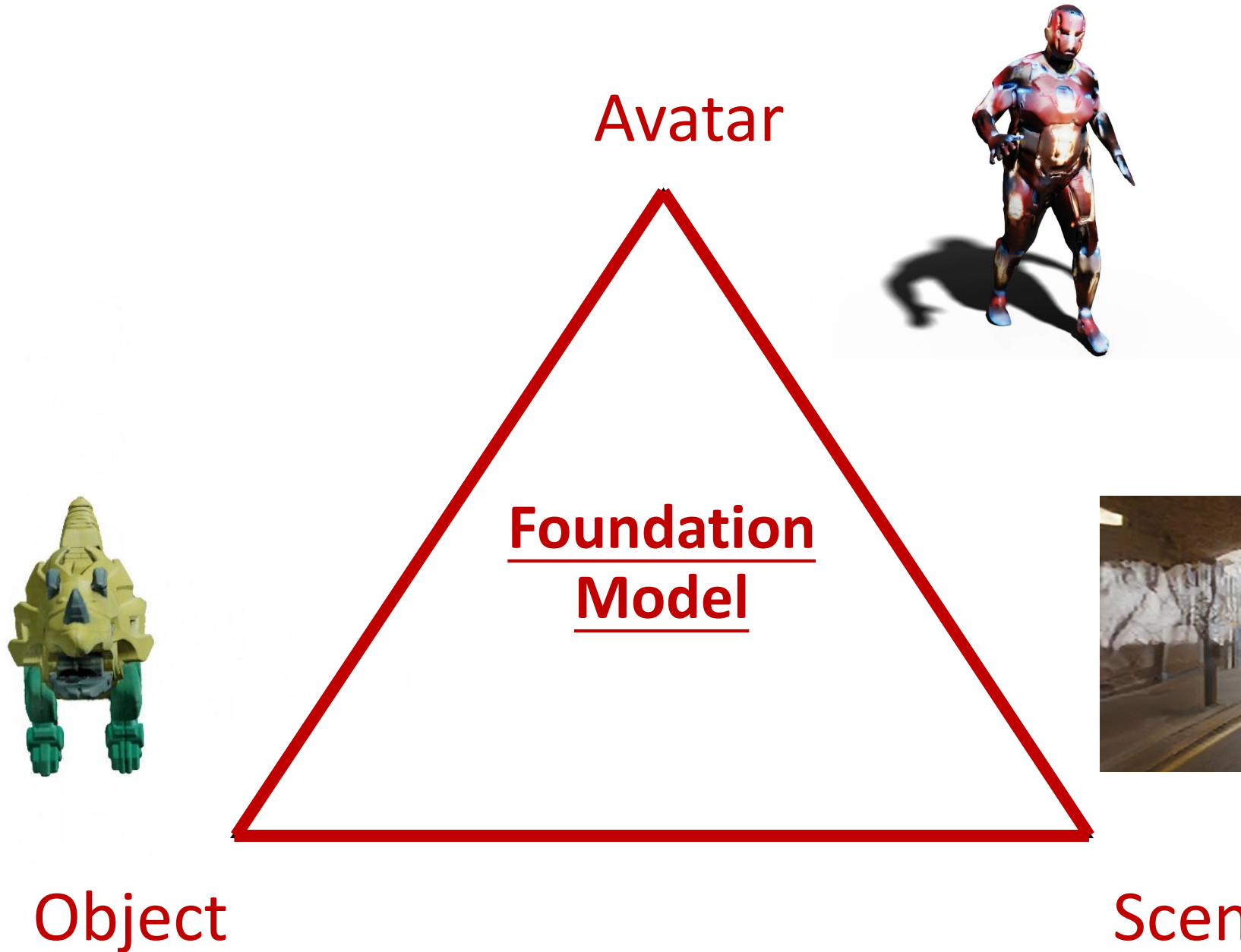


F2NeRF: Mobile 3D Scene Reconstruction



F2NeRF: Mobile 3D Scene Reconstruction





FreeU:

Free Lunch in Diffusion U-Net

Chenyang Si, Ziqi Huang, Yuming Jiang, Ziwei Liu

S-Lab, Nanyang Technological University



LaVie: Text-to-Video Foundation Model



Cinematic shot of Van Gogh's selfie, Van Gogh style.



A corgi's head depicted as an explosion of a nebula.



Yoda playing guitar on the stage.



The bund Shanghai, oil painting.



The Eiffel Tower at sunset, trending on artstation, oil painting.



A fantasy landscape, trending on artstation, 4k, high resolution.



A super cool giant robot in Cyberpunk city, artstation.



A Mars rover moving on Mars.



A space shuttle launching into orbit, with flames and smoke billowing out from the engine.





Adventure of a Panda



SEINE: Image-to-Video Foundation Model



Image2Video



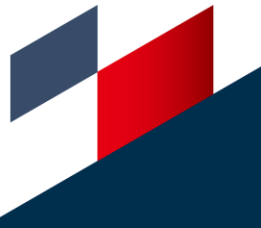
Transition



Image2Video



Transition





HyperDreamer: Image-to-3D Foundation Model



S-LAB
FOR ADVANCED
INTELLIGENCE



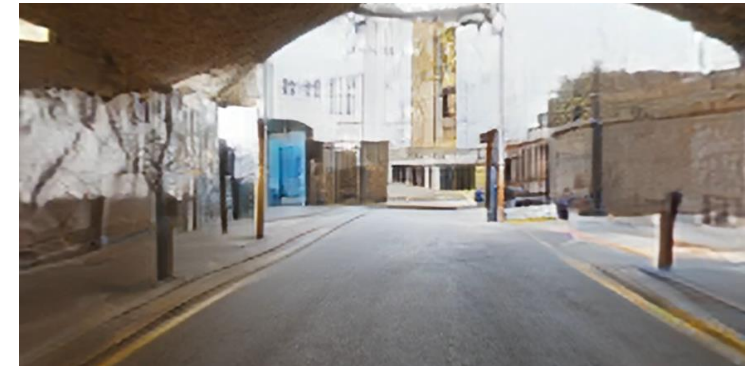


Object

Avatar



Thank You!



Scene

